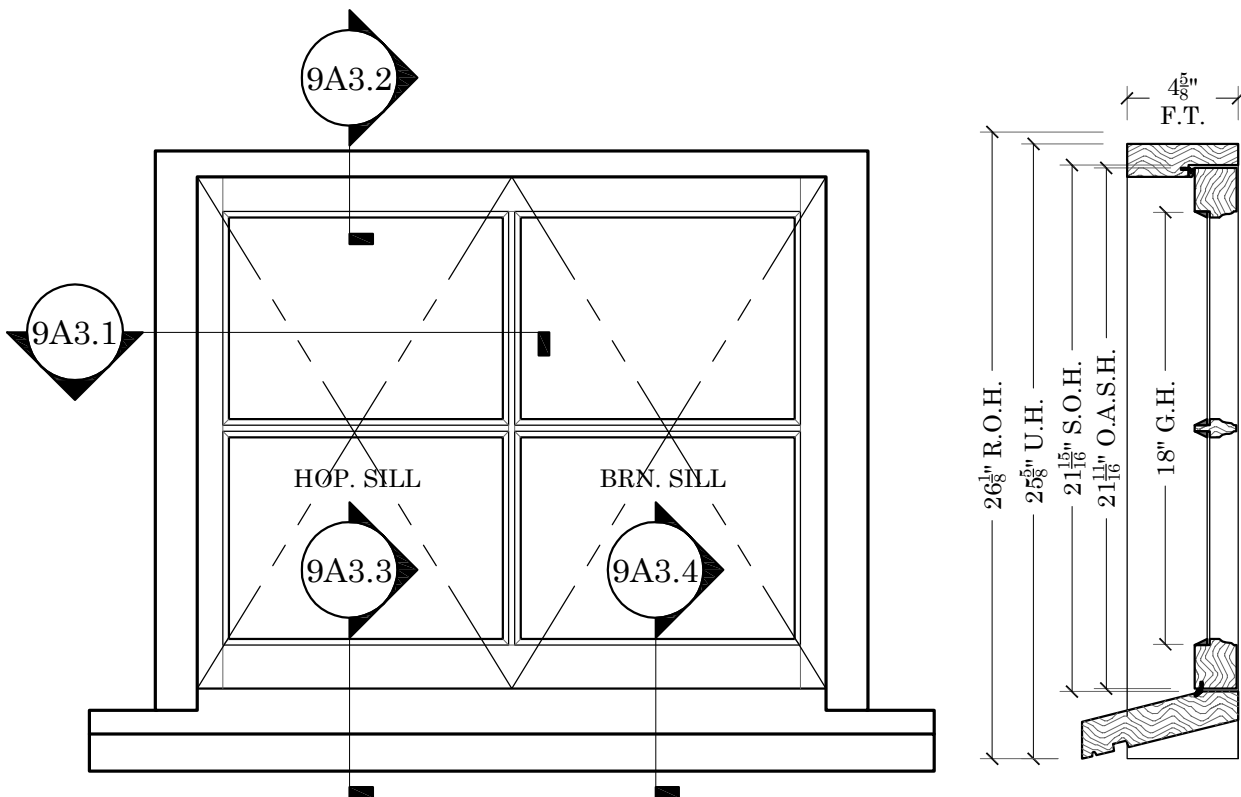
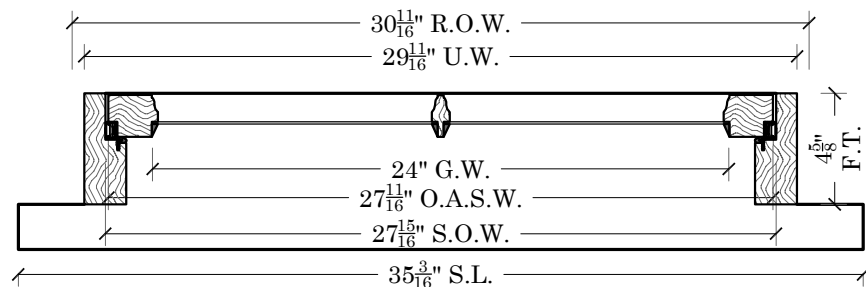


SASH & MILLWORK
 667 SPRING STREET
 NORTH DIGHTON, MA 02764
 PHONE # (508) 880-8808
 FAX # (508) 880-8828
 WWW.BOSTONSASH.COM



NEWPORT HOPPER/BARN

SCALE: 1-1/2"=1'



STANDARD

- 4 5/8" UNIT DEPTH
- S.S.B. GLASS (PUTTY GLAZED)
- UTILE MAHOGANY FRAME & SASH
- STANDARD 1-1/2" THICK UTILE SILLS
- PRIMED EXTERIOR/ RAW INTERIOR
- FULLY WEATHER SEALED
- 3/4" T.D.L. MUNTIN GRILL CONFIGURATIONS

SIZING

- U.W. = G.W.+5-11/16"
- S.O.W.=G.W.+3-15/16"
- O.A.S.W.= G.W.+3-11/16"
- D.L.O.W.=G.W.-7/16"
- U.H. = G.H.+7-5/8"
- S.O.H.= G.H.+3-15/16"
- O.A.S.H.=G.H.+3-11/16"
- D.L.O.H.=G.H.-7/16"

STD. HARDWARE

- TRUTH-ANDERBERG 201SS 55° 4 BAR HINGES
- 8" PRT#34.11.00.101 VENT H. 9"-16" 19LBS MAX.
- 10" PRT#34.11.00.102 VENT H. 16"-20" 13LBS MAX.
- 12" PRT#34.12.00.100 VENT H. 20"-24" 28LBS MAX.
- 14" PRT#34.13.00.102 VENT H. 23"-28" 33LBS MAX.
- 16" PRT#34.14.00.100 VENT H. 28"-34" 40LBS MAX.
- 18" PRT#34.15.00.102 VENT H. 28"-34" 40LBS MAX.
- 20" PRT#34.16.00.100 VENT H. 32"-34" 40LBS MAX.

OPTIONAL ITEMS

- 2" PINE OR UTILE MAHOGANY INT.EXTENSION JAMBS
- DOUBLE STRENGTH ANNEALED & OR TEMPERED GLASS
- D.P. RATING GLAZING
- 5/4"X4" OR 4/4"X5' NOMINAL WESTERN RED CEDAR CASING

B.S. STANDARDS
HOPPER / BARN OPTION 3
 DESCRIPTION:
ELEVATION, SECTIONS & NOTES
NEWPORT PROFILE

JOB:	P.O.# N/A
	DEALER N/A
	CONTRACTOR N/A
	ARCHITECT N/A
	PROJECT MANAGER N/A
	DRAWN BY: KEITH KUTHAN
	DATE: 1/13/2016
	SCALE: NOTED
	DWG. NO: SK9A3.0
	SHEET: 1 OF 5