

**SASH & MILLWORK**  
 667 SPRING STREET  
 NORTH DIGHTON, MA. 02764  
 PHONE # (508) 880-8808  
 FAX # (508) 880-8828  
 WWW.BOSTONSASH.COM

**B.S. STANDARDS**  
**AWNING OPTION 2**  
 DESCRIPTION:  
**ELEVATION, SECTIONS & NOTES**  
**NANTUCKET E.P. PROFILE**

JOB: P.O.#  
 N/A  
 DEALER  
 N/A  
 CONTRACTOR  
 N/A  
 ARCHITECT  
 N/A  
 PROJECT MANAGER  
 N/A  
 DRAWN BY:  
**KEITH KUTHAN**  
 DATE:  
 11/11/2015  
 SCALE:  
 NOTED  
 DWG. NO:  
**SK4A2.0**  
 SHEET:  
 1 OF 5

## STANDARD

- 4-5/8" UNIT DEPTH
- S.S.B. GLASS (PUTTY GLAZED)
- UTILE MAHOGANY FRAME & SASH
- STANDARD 1-1/2" THICK WESTERN RED CEDAR SILLS
- PRIMED EXTERIOR/ RAW INTERIOR
- TRUTH HARDWARE (WHITE) SEE HARDWARE LIST
- FULLY WEATHER SEALED
- 5/8" T.D.L. MUNTIN GRILL CONFIGURATIONS
- EXTERIOR ENERGY PANEL FOR ADDED EFFICIENCY
- WHITE ROLLED FORM ALUMINUM SCREEN FRAMES
- CHARCOAL FIBERGLASS SCREEN

## STD. HARDWARE

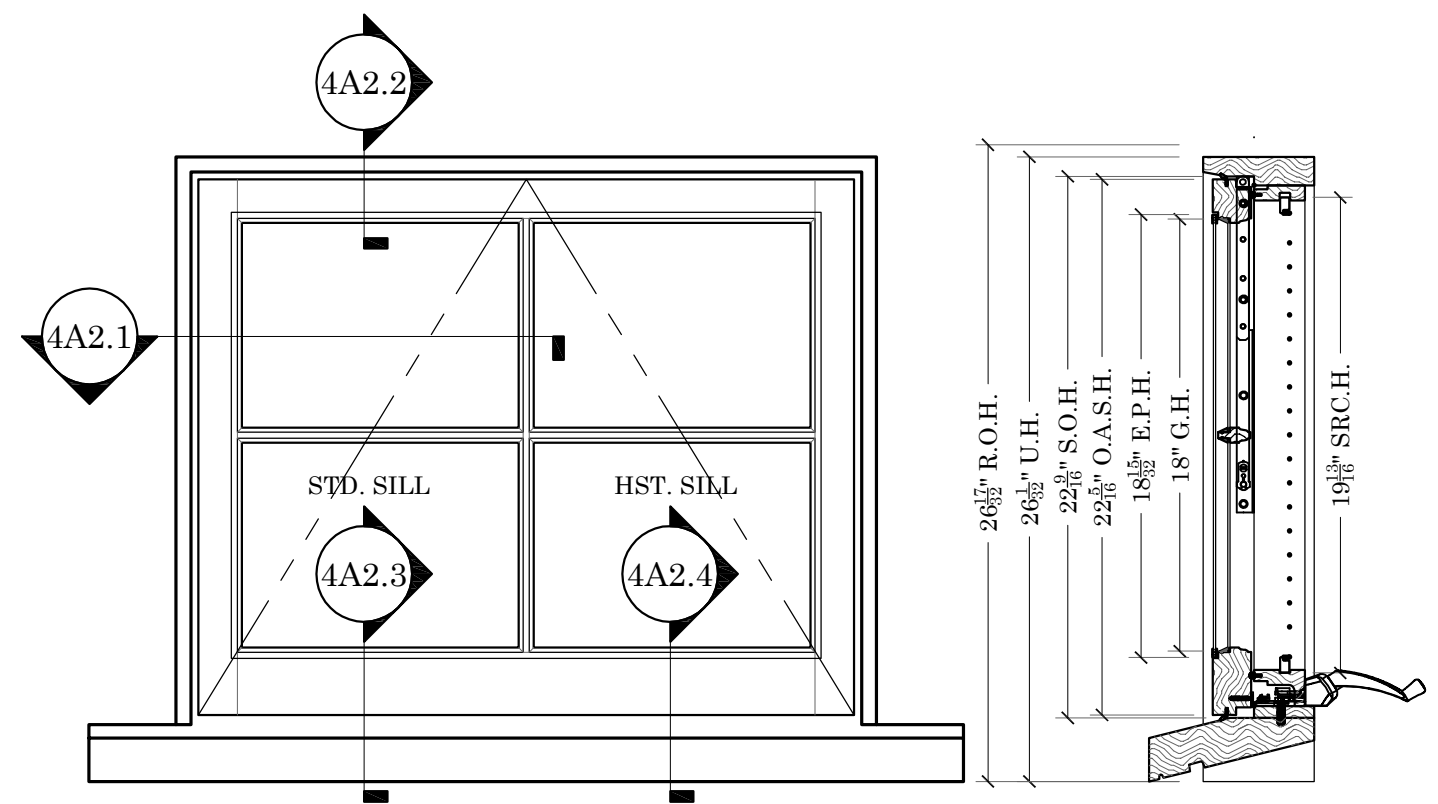
|   |                               |
|---|-------------------------------|
| 1 | TRUTH ENTRYGUARD OP. #11.42   |
| 1 | TRUTH SASH HOOK #20008        |
| 1 | TRUTH STANDARD HANDEL #10024  |
| - | TRUTH OPERATOR COVER #10341   |
|   | 32 & 78 WHITE                 |
| 1 | TRUTH AWNING HINGE 14" #13.14 |

## SIZING

- U.W. = G.W.+5-3/16"
- S.O.W.=G.W.+3-9/16"
- O.A.S.W.= G.W.+3-5/16"
- D.L.O.W.=G.W.-5/16"
- U.H. = G.H.+8"
- S.O.H.= G.H.+4-9/16"
- O.A.S.H.=G.H.+4-5/16"
- D.L.O.H.=G.H.-5/16"

## OPTIONAL ITEMS

- 2" PINE OR UTILE MAHOGANY INT.EXTENSION JAMBS
- DOUBLE STRENGTH ANNEALED & OR TEMPERED GLASS
- D.P. RATING GLAZING
- HISTORIC 1-3/4" THICK WESTERN RED CEDAR SILLS
- LIFT OUT WOOD SCREENS
- 5/4"X4" OR 4/4"X5' NOMINAL WESTERN RED CEDAR CASING



## NANTUCKET E.P. AWNING

SCALE: 1-1/2"=1'

